

REVISIONS	BY
1	
2	
3	
4	
5	
6	
7	
8	

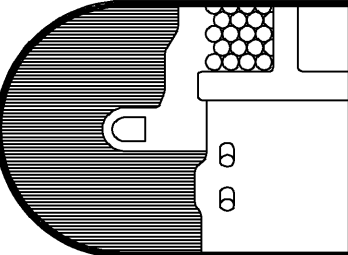
Sucasa "C"

THESE DRAWINGS ARE THE PROPERTY OF ALEXANDER AND SONS, INC. ANY REPRODUCTION OF THESE DRAWINGS OR ANY CONSTRUCTION WORK USING THESE ORIGINAL CONCEPTS BY ANY OTHERS THAN ALEXANDER AND SONS, INC. CONSTITUTES A VIOLATION OF OUR COPYRIGHT AND WILL BE SUBJECT TO LEGAL ACTION.

Alexander Homes

Alexander Homes is a division of Alexander & Sons, Inc.

18884 AVENIDA DEL RAY
RIO VERDE, ARIZONA 85255
(602) 471-2700 or 867-8480
FAX: (602) 471-7608



DRAWN
A.C.P.
CHECKED
M.C.
DATE
=

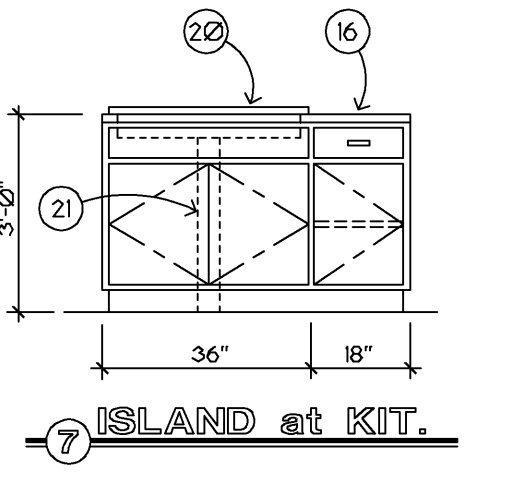
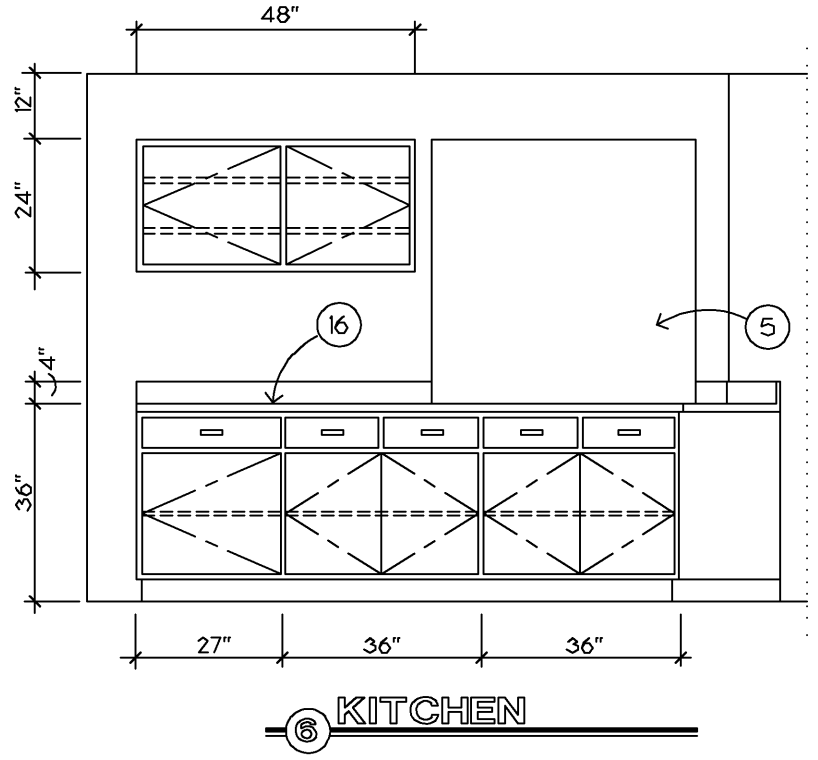
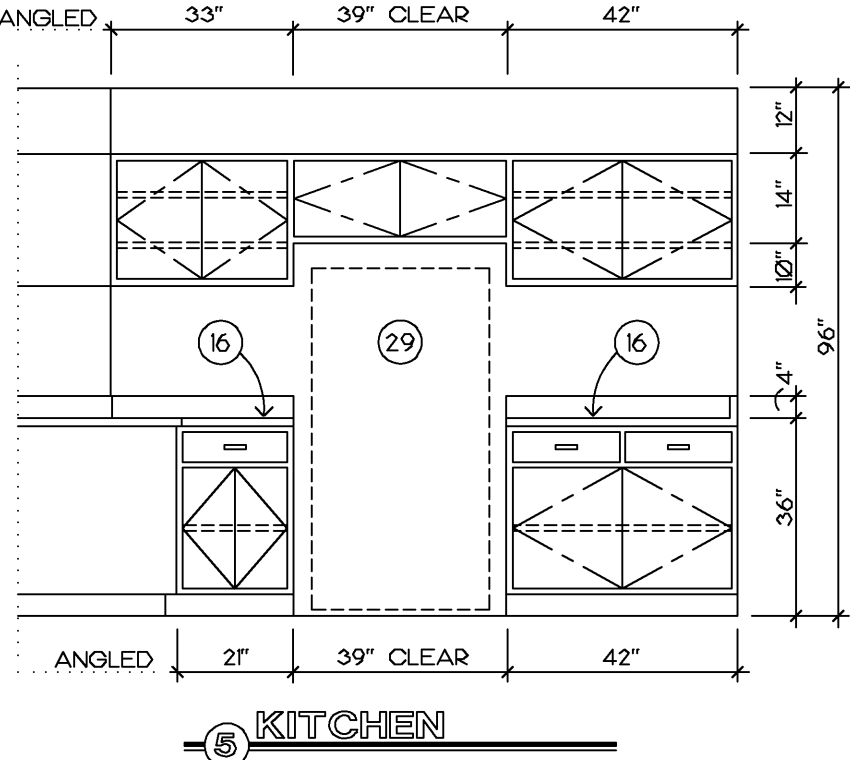
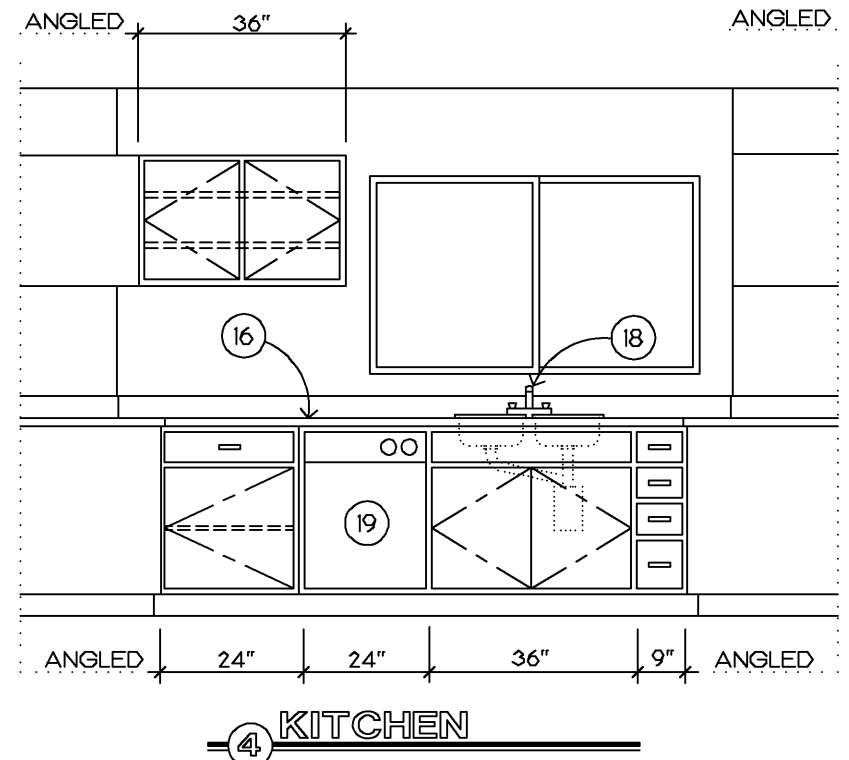
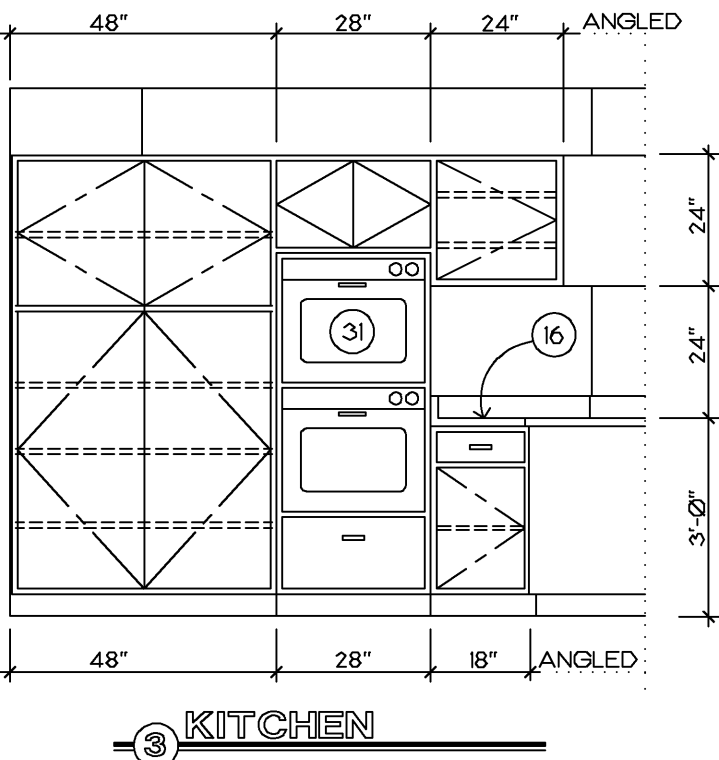
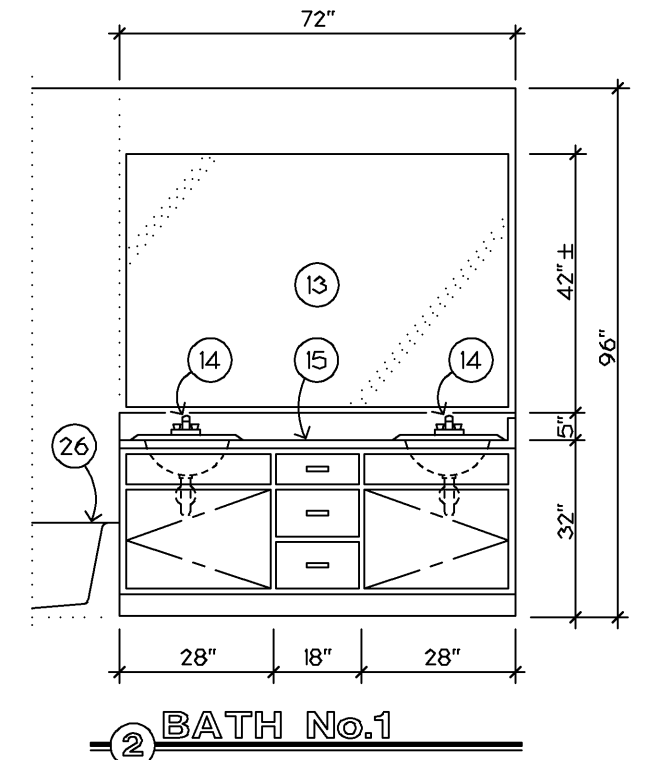
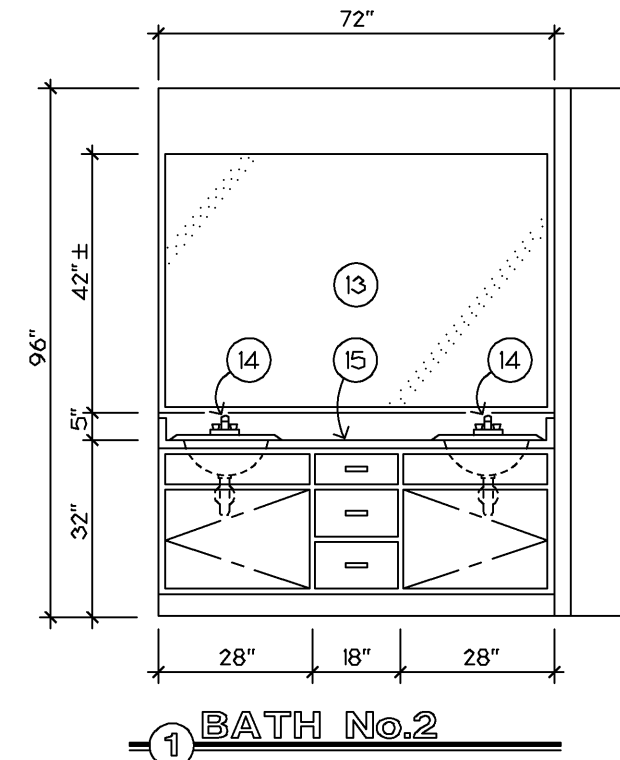
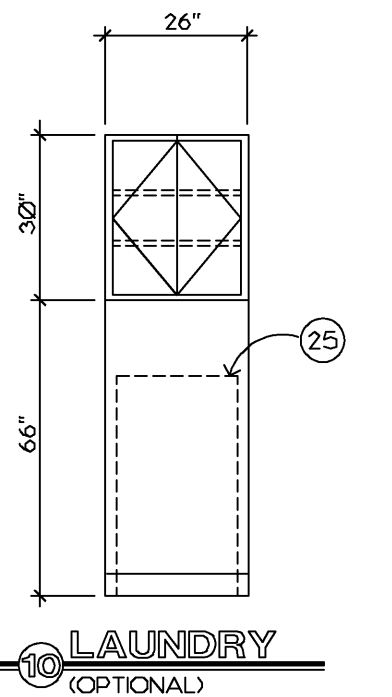
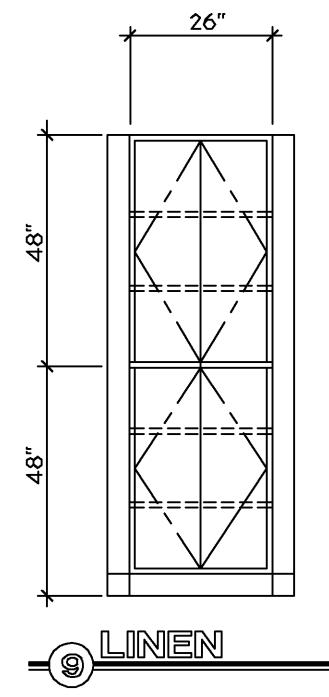
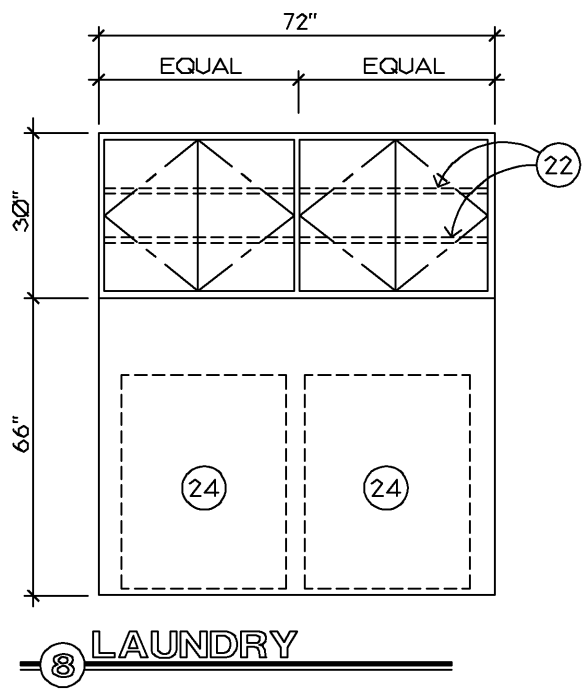
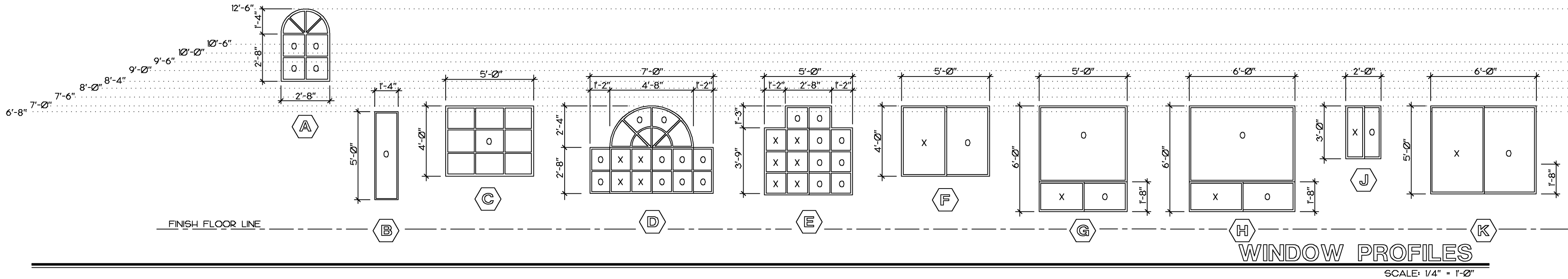
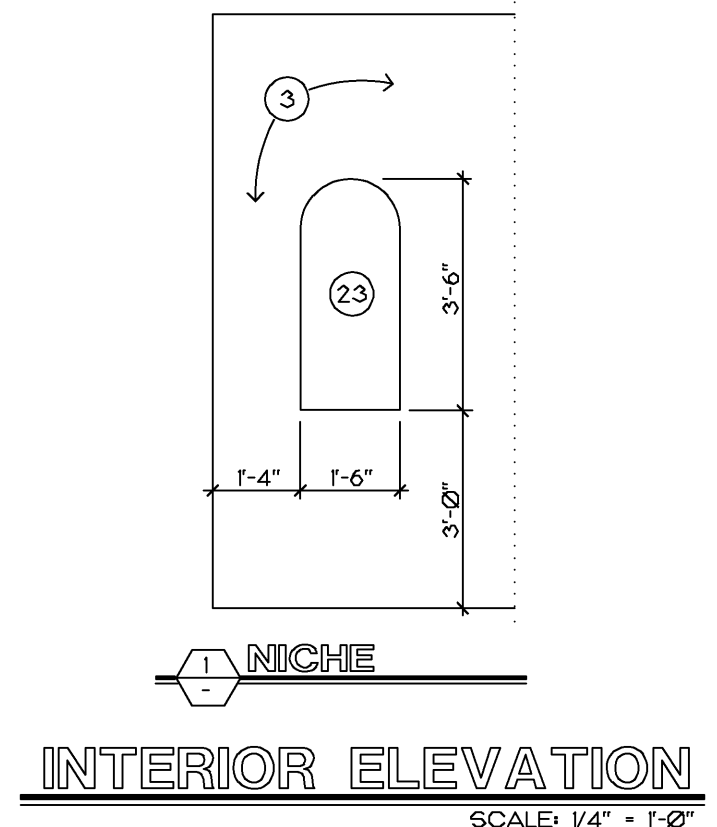
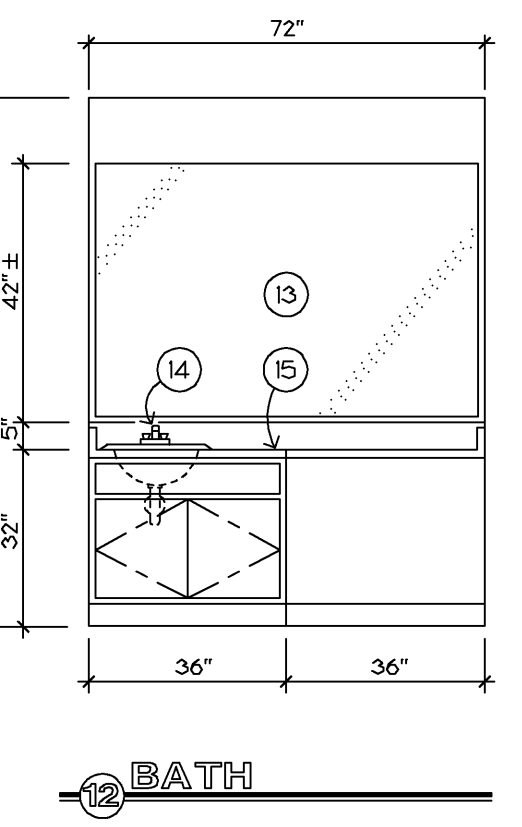
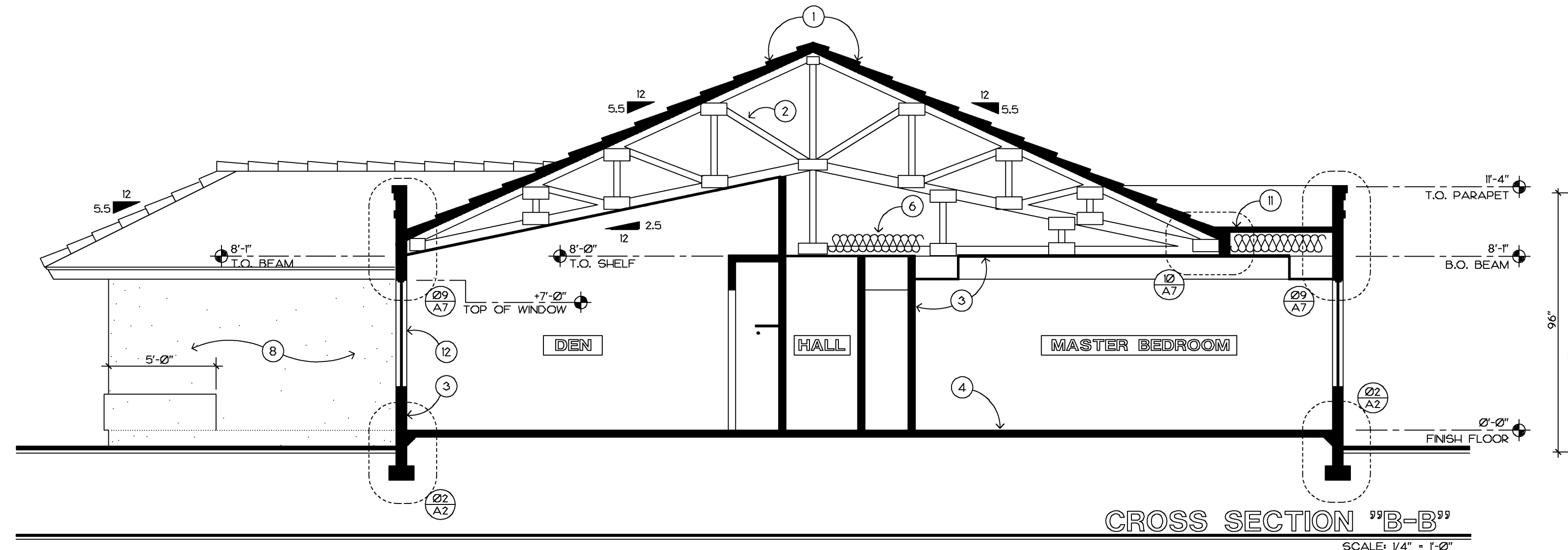
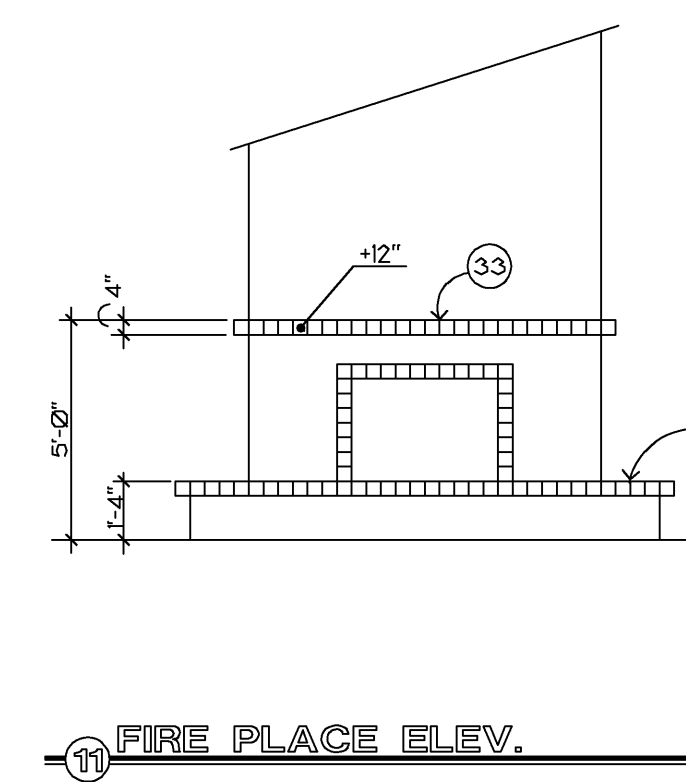
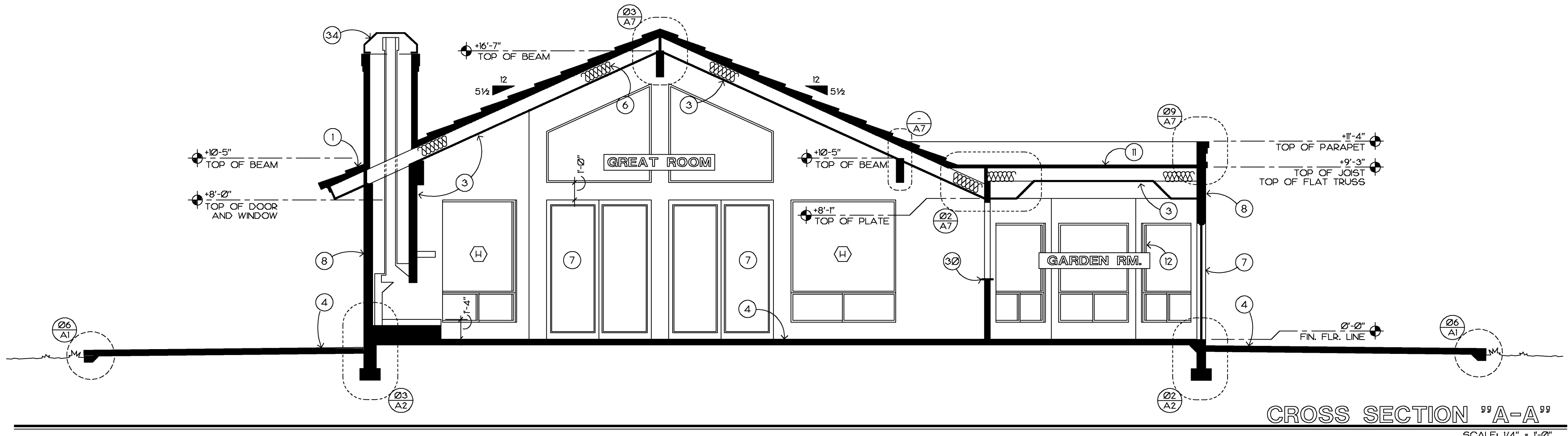
SCALE
AS SHOWN
JOB NO.
=

SHEET

A5

OF 08 SHEETS

- KEYED NOTES:**
- TILE ROOFING OVER (2) LAYERS 40 LB. FELT OVER 5/8" O.S.B.
 - PREFAB WOOD TRUSSES AT 24" O.C. - SEE FRAMING PLAN
 - 1/2" GYPSUM BOARD FINISH
 - 4" CONCRETE SLAB OVER 4" ABC FILL
 - OPEN TO BEYOND
 - R-30 BATT INSULATION IN CEILING
 - DOOR - SEE FLOOR PLAN FOR SIZE & TYPE
 - POWERWALL STUCCO SYSTEM OVER FRAME I.C.S.O. 3824
 - STUCCO FINISH OVER MASONRY BASE
 - FINISH GRADE
 - 1" URETHANE FOAM ROOF OVER 5/8" O.S.B.
 - WINDOW - SEE WINDOW PROFILES THIS SHIT. FOR SIZE AND ACTION
 - MIRROR
 - LAVORATORY HARDWARE - SEE DECO SCHED.
 - CULTURED MARBLE TOP AND SPLASH WITH INTEGRAL LAV. BOWLS
 - PLASTIC LAMINATED TOP AND SPLASH
 - RAISED PLASTIC LAMINATED COUNTERTOP (12" WIDE)
 - DOUBLE COMPARTMENT SINK WITH DISPOSAL
 - DISH-WASHER
 - COMBINATION COOKTOP / GRILLE WITH EXHAUST DUCT TO FLOOR
 - EXHAUST DUCT TO EXIT UNDER SLAB TO EXTERIOR OF HOUSE - SEE FOUNDATION PLAN
 - ADJUSTABLE SHELVES
 - RECESSED NICHE - SEE FLOOR PLAN FOR DEPTH
 - WASHER AND DRYER - OPTIONAL
 - DURA TUB - OPTIONAL
 - CULTURED MARBLE TUB - SEE FLOOR PLAN
 - TOILET - SEE DECO SCHEDULE
 - TUB/ SHOWER WITH SHOWER ROD AND CERAMIC TILE ON ADJACENT WALLS TO +7'-0" ABOVE FINISH FLOOR
 - REFRIGERATOR - OPTIONAL
 - HARDWOOD TOP +40"
 - DOUBLE OVEN
 -
 - TILE TOP AND AND ONE ROW ON TOP



INTERIOR ELEVATIONS
NOTE: ALL CABINET ELEVATIONS SCALE: 3/8" = 1'-0"

NOTE: ALL CABINET ELEVATIONS TO BE FIELD VERIFIED

SU CASA "C" - GAR. RIGHT

SC-C3-A5