

AREA BREAKDOWN:	
LIVEABLE	2432 S.F.
GARAGE	552 S.F.
COVERED PATIO	803 S.F.
COVERED ENTRY	31 S.F.
TOTAL UNDER ROOF	3818 S.F.

KEYED NOTES:

- 1 WATER CLOSET
- 2 COMBINATION COOKTOP / GRILL W/ EX-HAUST DUCT DOWN TO SLAB
- 3 REFRIGERATOR
- 4 DISHWASHER
- 5 WATER HEATER W/ CIRCULATION PUMP
- 6 LINEN - 5 SHELVES WITH FACE FRAME CABINET DOORS
- 7 HOSE BIBB
- 8 ROD AND SHELF
- 9 DOUBLE ROD AND SHELF
- 10 RECESSED MEDICINE CABINET
- 11 A.C. UNIT ON 2" HIGH FRAME PLATFORM - SEE MECHANICAL DRAWINGS
- 12 WASHER AND DRYER - PROVIDE 4" VENT AT DRYER TO EXTERIOR
- 13 PLANTING AREA
- 14 CONCRETE WALK OR PATIO - SEE DECO SCHEDULE FOR FINISH
- 15 TUB / SHOWER WITH SHOWER ROD AND CERAMIC TILE ON ADJACENT WALLS TO +7'-0" A.F.F.
- 16 CULTURED MARBLE TOP, EDGE & SPLASH WITH INTEGRAL LAV BOWLS
- 17 MASONRY SCREEN WALL AT +3'-4" A.F.F. - SEE EXTERIOR ELEVATIONS
- 18 CULTURED MARBLE TUB
- 19 FURRED CEILING TO 7'-0" A.F.F.
- 20 1/2 WALL WITH ARCHED OPENING - OAK SILL AT +4'-0" A.F.F. (+7'-10" A.F.F. TOP OF ARCH)
- 21 METAL THRESHOLD & WEATHER STRIP
- 22 6" PLUMBING WALL
- 23 SKYLIGHT - SEE FRAMING
- 24 3'-0" X 5'-0" VENT WITH R/S 2x6 WOOD LOUVERS
- 25 ROOF MOUNTED TURBINES
- 26 PREFABRICATED METAL FIREPLACE - "TEMPO" U.L. RATED 2-CLEARANCE NO. TBF42 (C.B.O. #3195)
- 27 16" HIGH RAISED HEARTH
- 28 ARCHED OPENING - TOP OF ARCH +7'-10" (T.O. POT SHELF +8'-6" & 18" DEEP)
- 29 2'-0" SQUARE FRAME COLUMN FROM C.L.G. TO TOP OF POT SHELF
- 30 POT SHELF - BOT. AT 8'-0" AND TOP AT 9'-4"
- 31
- 32 OPTIONAL MASONRY WALL +2'-0" A.F.F.
- 33 SLOPE GARAGE FLOOR 2"
- 34 RECESSED RETURN AIR GRILLE IN FACE OF WALL
- 35 SHOE RACK WITH 5 SHELVES
- 36 BOX OUT FOR RETURN AIR GRILLE
- 37 5/8" TYPE "X" GYPSUM BOARD AT WALLS AND CEILING AT GARAGE ADJACENT TO LIVABLE AREA - 1/2" ON OTHER WALLS
- 38 2x4'S AT 16" O.C.
- 39 A.C. COMPRESSOR ON CONCRETE PAD - SEE MECHANICAL DRAWINGS
- 40 DURATUB - OPTIONAL
- 41 24" x 36" ROOF SCUTTLE THRU CEILING
- 42 TILE FLOORING - SEE DECO SCHED.
- 43 WOOD POST - SIZE TO BEAM
- 44 DOUBLE OVEN - SEE DECO SCHEDULE
- 45 RECESSED NICHE - SEE ELEVATION 9/A4
- 46 SINK - SEE DECO SCHEDULE
- 47 SOFT WATER LOOP
- 48 2x6'S AT 16" O.C. W/ R-19 BATT INSULATION
- 49 CARPET - SEE DECO SCHEDULE
- 50 CULTURED MARBLE SHOWER FLOOR AND WALLS TO +7'-0"
- 51 TEMPERED GLASS SHOWER ENCLOSURE
- 52 VINYL - SEE DECO SCHEDULE
- 53 BROOM CLOSET W/ 2 SHELVES
- 54 OPTIONAL OVERHEAD CABINET
- 55 FURR DOWN CEILING TO CREATE COFFERED CEILING
- 56 CENTERLINE OF BEAM ABOVE - SEE FRAMING PLAN
- 57 PANTRY CLOSET WITH 5 SHELVES
- 58 KIRKWOOD SHUTTERS - OPTIONAL
- 59 TOP OF WALL +8'-0"

REVISIONS	BY
1	
2	
3	
4	
5	
6	
7	
8	

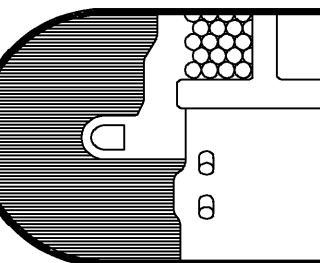
Sucasa "C"

THESE DRAWINGS ARE THE PROPERTY OF ALEXANDER AND SONS, INC. ANY REPRODUCTION OF THESE DRAWINGS OR ANY CONSTRUCTION WORK USING THESE ORIGINAL CONCEPTS BY ANY OTHERS THAN ALEXANDER AND SONS, INC. CONSTITUTES A VIOLATION OF OUR COPYRIGHT AND WILL BE SUBJECT TO LEGAL ACTION.

Alexander Homes

Alexander Homes is a division of
Alexander & Sons, Inc.

18894 AVENIDA DEL RAY
RIO VERDE, ARIZONA 85255
(602) 471-2700 or 981-8490
FAX: (602) 471-7608



DRAWN A.C.P.
CHECKED M.C.
DATE =
SCALE AS SHOWN
JOB NO. =
SHEET

A3

OF 08 SHEETS

SU CASA "C" - GAR. LEFT